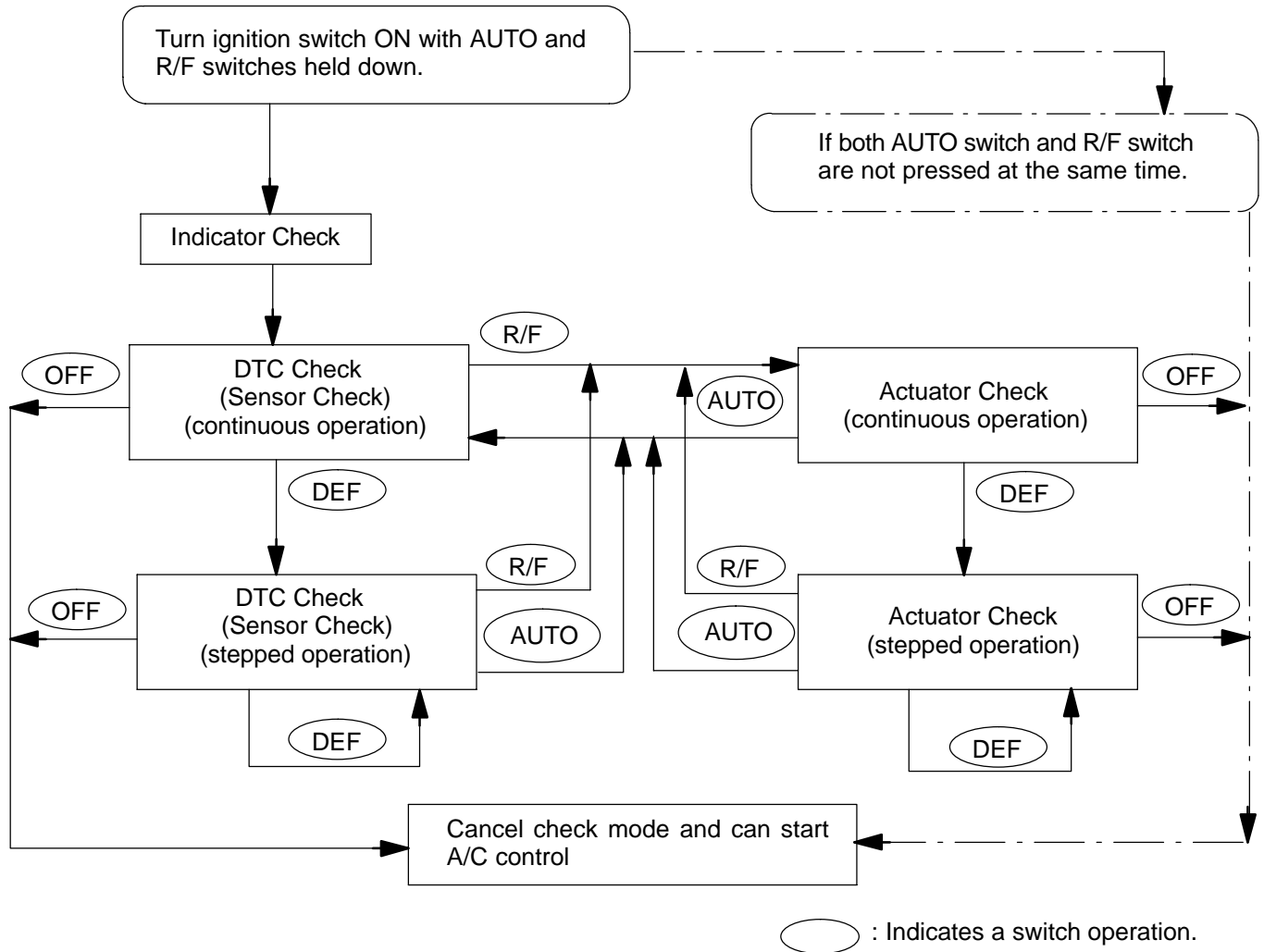
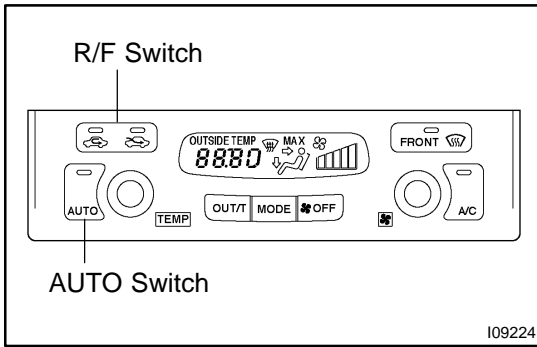


PRE-CHECK

1. LIST OF OPERATION METHODS

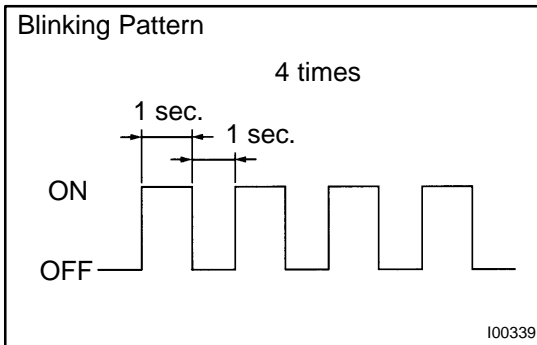
By operating each of the A/C control switches as shown in the diagram below, it is possible to enter the diagnosis check mode.





2. INDICATOR CHECK

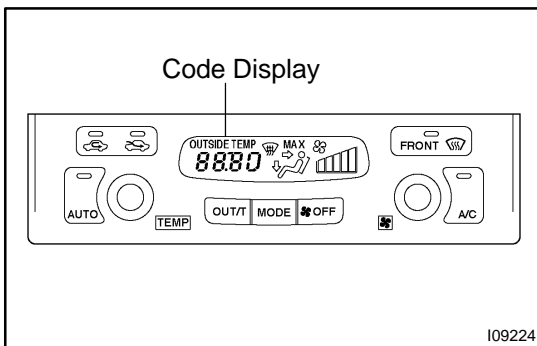
- (a) Turn the ignition switch to ON while pressing the air conditioning control AUTO switch and R/F switch simultaneously.



- (b) Check that all the indicators light up and go off at 1 second intervals 4 times in succession.

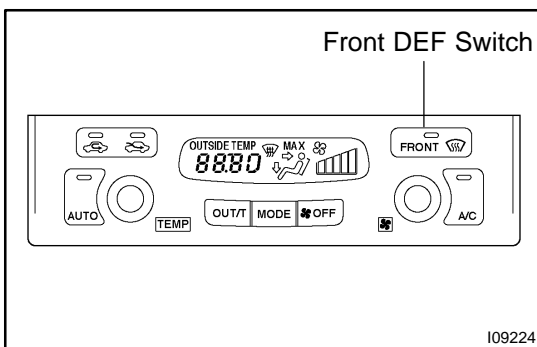
HINT:

- After the indicator check is ended, the system enters the DTC begins automatically.
- Press the OFF switch when desiring to cancel the check mode.

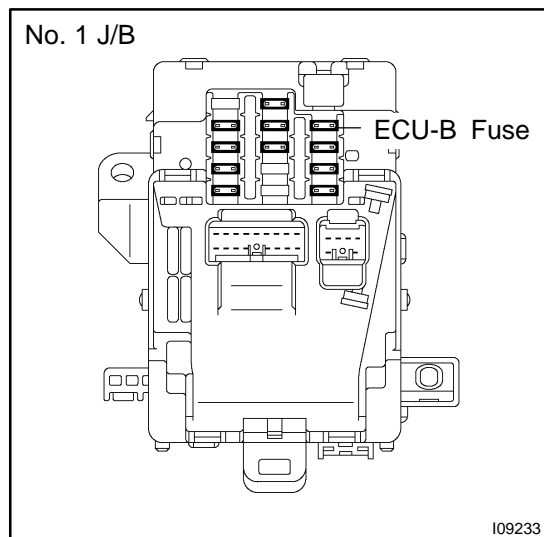


3. DTC CHECK (SENSOR CHECK)

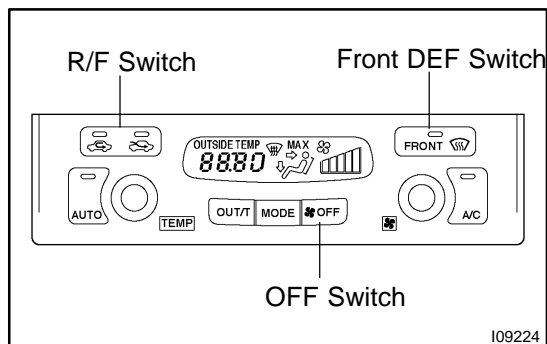
- (a) Perform an indicator check. After the indicator check is completed, the system enters the DTC check mode automatically.
- (b) Read the code displayed on the panel. Refer to the list of DTCs on page [DI-582](#) when reading the DTCs. (DTCs are output at the temperature display).



- (c) If the slower display is desired, press the front DEF switch and change it to stepped operation. Each time the front DEF switch is pressed, the display changes by 1 step.

**4. CLEARING DTC**

- (a) Pull out the ECU-B fuse in No. 1 J/B for 10 sec., or longer to clear the DTC memory.
- (b) After reinserting the fuse, check that the normal code is output.



5. ACTUATOR CHECK

- After entering the DTC check mode (Sensor Check Mode) press the R/F switch.
- Since each damper, motor and relay automatically operates at 1 second intervals beginning in order from 10 in the temperature display, check the temperature and air flow visually and by hand.
If a slower display is desired, press the FRONT DEF switch and change it to a stepped operation. Each time the FRONT DEF switch is pressed, the display changes by 1 step.

HINT:

- Code are displayed in order from the smaller to the larger numbers.
- To cancel the check mode, press the Off switch.

Step No.	Display code	Conditions				
		Blower motor	Air flow vent	Air inlet damper	Magnetic clutch	Air mix damper
1	0	OFF	FACE	FRESH	OFF	Cool side (0 % open)
2	1	1	FACE	FRESH	OFF	Cool side (0 % open)
3	2	16	FACE	FRESH	ON	Cool side (0 % open)
4	3	16	FACE	FRS/REC	ON	Cool side (0 % open)
5	4	16	FACE	RECIRC	ON	Cool / Hot (50 % open)
6	5	16	BI-LEVEL	RECIRC	ON	Cool / Hot (50 % open)
7	6	16	FOOT	RECIRC	ON	Hot side (100 % open)
8	7	16	FOOT	RECIRC	ON	Hot side (100 % open)
9	8	16	FOOT/DEF	RECIRC	ON	Hot side (100 % open)
10	9	31	DEF	RECIRC	ON	Hot side (100 % open)